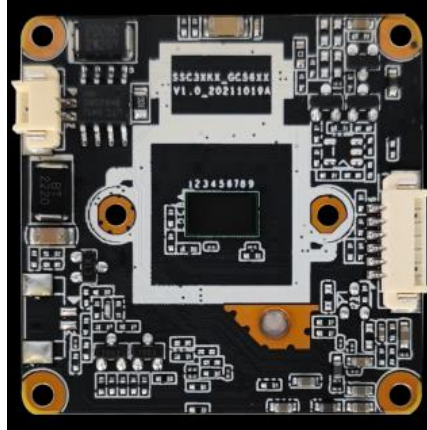


MC-L18 6MP Starlight module

Product picture:



Features:

- 1, 1/2.7 inch starlight CMOS sensor;
- 2, support H.265+, H.265, H.264 coding;
- 3, support 2 kinds of light signal control: CDS, PWM signal;
- 4, support soft light sensitivity: dual light mode, full color mode, infrared mode;
- 5, support image flipping, support digital wide dynamic;
6. Intelligent analysis: Pedestrian detection, vehicle type detection, non-motor vehicle detection;
- 7, support voice intercom, voice broadcast, custom voice;
- 8, support Onvif/Hikvision;
- 9, support character superposition;
10. IP address filtering;
- 11, support POE expansion;
12. Provide SDK (WINDOWS,Android, Linux) development kit

Product parameter:

Specifications	MC-L18
Model	MC-L18
Main chip	SSC30KQ
Image Sensor	1/2.7" starlight CMOS
Video processing	H.265+/H.265/H.264 video coding, support stream 0.1M~8Mbps adjustable; The frame rate is adjustable from 1 to 30 frames per second
Image output	Main stream: 25FPS (3072×2048, 2592×1944, 2688x1520) 30FPS@(2560×1440,2304×1296, 1920×1080, 1280×720);
	Sub stream:720×480,D1,VGA,640×360
Audio interface	Audio linear 1 input 1 output
Audio processing	G.711 coding standard, support two-way voice intercom, support audio and video



	synchronization;
IRCUT interface	Integrated IRCUT switching circuit, automatic/external control/manual/timing to control IRCUT day and night mode
Network interface	1 RJ45 Ethernet interface, 10/100M adaptive;
Light board interface	CDS,PWM infrared, PWM warm light;
IO interface	Power zoom and autofocus interfaces are supported, with a zoom lens and a zoom control panel and a zoom program
Reliability	Power supply, network comprehensive lightning protection, in line with the national standard GB/T17626.5, international standard IEC61000-4-5
Business function	Support OSD, support real-time audio and video transmission, accurate humanoid detection, dual light source alarm, sound alarm;
Network protocol	Support HTTP/RTSP/DHCP/NTP/ONVIF/P2P network protocols, such as the optional GB28181, RTMP and many kinds of NVR butt joint agreement
Power source	The power consumption of the 12V input port is 170mA
Mobile phone surveillance	Support for mobile monitoring (iOS, Android)AC18Pro/Video Link
Working environment	-40~+85℃
Size	38(L) * 38(W)